



ELMICH JOINT STOCK COMPANY

**Address:** An My - Don Xa industrial Zone, Binh My town,  
Binh Luc district, Ha Nam province, Vietnam

**Contact:** Ms. Hana Hoang - Sales manager

**Mobile:** +84978972189



<http://elmichhousewares.com.vn>



<http://elmich.vn>



NEW  
**DESIGN**

MADE IN VIETNAM

2025





## FACTORY



## — ABOUT US —

Elmich JSC is a leading manufacturer of premium cookware in Vietnam. Since our establishment in 2015, we have been operating a state-of-the-art factory spanning 50,000 sqm, specializing in pressed aluminum, forged aluminum, and stainless steel cookware for both domestic and international markets.

Equipped with cutting-edge European technology and production lines, our products are manufactured under strict quality control standards, complying with ISO 9001, ISO 14001, SA 8000, and GSV (CTPAT) certifications. With an annual production capacity of 14 million units, we cater to a diverse range of customer needs. Our in-house R&D, tooling department, and advanced laboratory, designed to LGA standards, ensure continuous innovation and superior quality.

As a trusted strategic partner to numerous global clients across America, Europe, and Asia, we are committed to expanding our presence worldwide, delivering high-quality products at competitive prices. We warmly invite customers to connect with us and visit our factory - we believe Elmich JSC will be your ideal business partner.

## CERTIFICATION



ISO 9001:2015  
(Quality management)



ISO 14001: 2015  
(Environmental management)



SA 8000  
(Social Accountability)



GSV  
(Global Security verification)

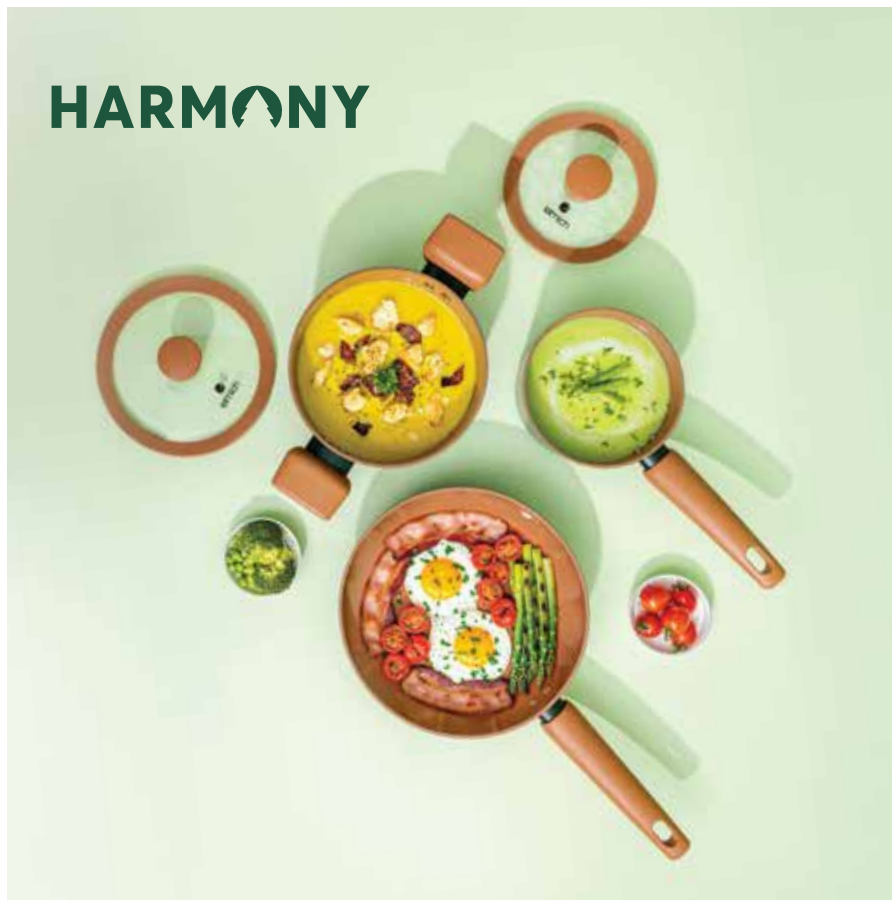
## PRODUCTS





## HARMONY COLLECTION

Model No: 01

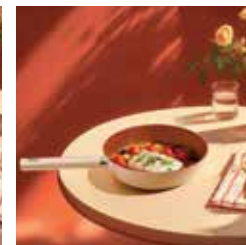
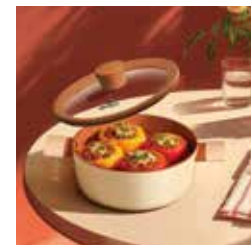


Innovative design that blends cutting-edge technology with modern kitchen trends



## MOCHA COLLECTION

Model No: 02



Long-lasting non-stick surface for healthier meals and hassle-free cleanup.

## VERONA COLLECTION

Model No: 03



Vibrant, modern finishes that transform everyday cooking into a stylish experience



## MODERN & HIGH PERFORMANCE

Model No: 04



Premium ceramic non-stick surface, PFAS-free, safe, and durable

## SLEEK & VERSATILE

Model No: 05



A stylish collection that suits all cooking occasions.



## MAXIMUM CONVINIENCE

Model No: 06



Ideal for quick meals or elaborate dishes, meeting all cooking needs



## CLASSIC YET ELEGANT

Model No: 07



A stylish collection that suits all cooking occasions.



## THE ULTIMATE COMBINATION

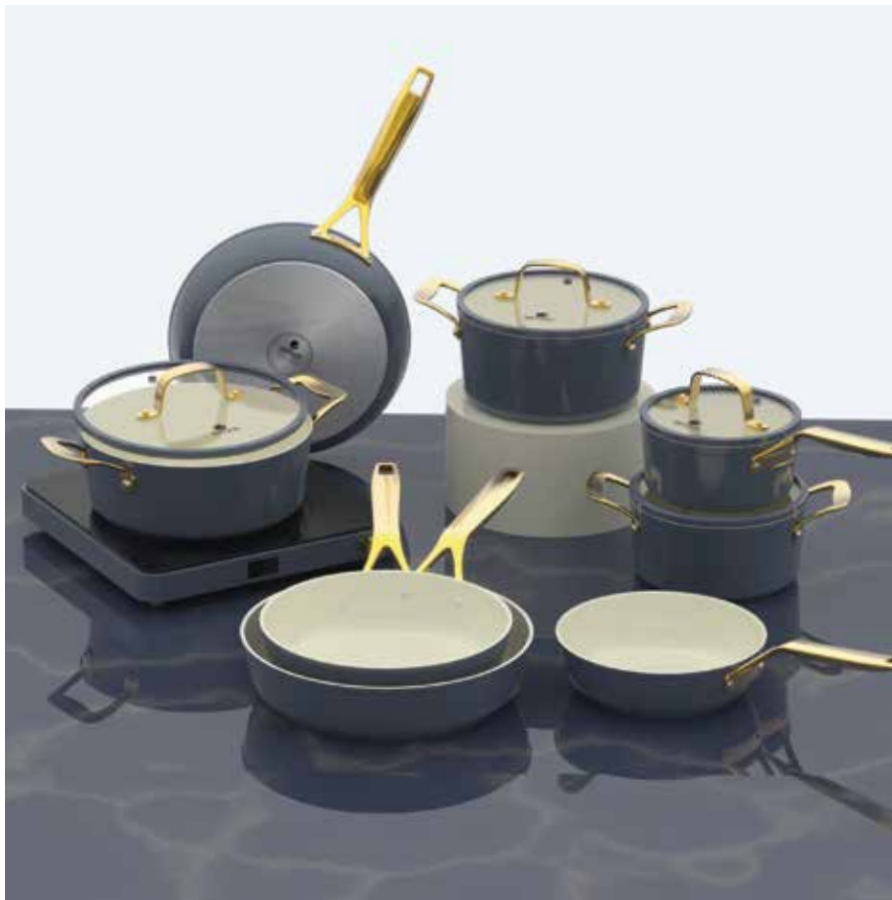
Model No: 08



A cookware set designed with cutting-edge technology for outstanding performance.

## LUXURY IN COOKING

Model No: 09



A perfect balance  
between aesthetics  
and functionality



## THE FUTURE OF COOKING

Model No: 10



Advanced non-stick  
technology enhances  
flavors while maintaining  
food quality



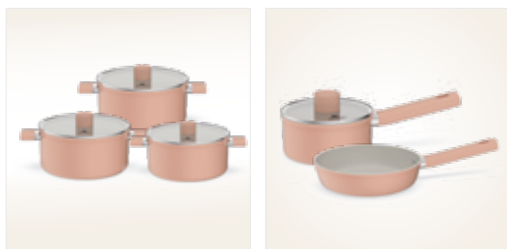


## EXCEPTIONAL VALUE

Model No: 11



Ultra-durable  
non-stick surface  
reduces oil use for  
healthier cooking.



## SAFE & SUSTAINABLE

Model No: 12



PFAS-free materials  
ensure health safety and  
eco-friendliness



## STYLE & FUNCTIONALITY

Model No: 13



Enjoy a great cooking experience with creative knobs & handle designs



## PROFESSIONAL STANDARD

Model No: 14



High-quality non-stick coating, ideal for both home and professional chefs

## TIMELESS DURABILITY

Model No: 15



Premium non-stick coating for long-lasting beauty and performance



## SOPHISTICATED STYLE

Model No: 16



Elegant cookware in stunning colors to elevate your kitchen





## TOP CHOICE FOR EVERY KITCHEN

Model No: 17



Compatible with all  
stovetops, including  
induction



## INNOVATIVE DESIGN

Model No: 18



Unique knob and handle  
details for a fresh  
cooking experience



## MODERN ELEGANCE

Model No: 19



Trendy and stylish, a great addition to any contemporary kitchen



## EFFORTLESS COOKING

Model No: 20



Advanced non-stick surface prevents food from sticking, making cleaning easy

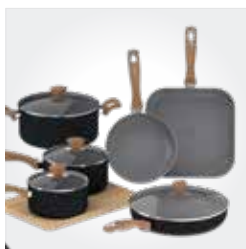


## INSPIRED BY NATURE

Model No: 21

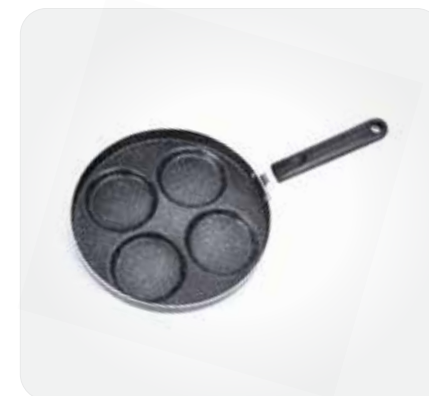


Trendy and stylish, a great addition to any contemporary kitchen



## ENDLESS CREATIVITY

Model No: 22



Versatile design that blends effortlessly with any kitchen style.



## HYBRID COLLECTION

Model No: 23



Honeycomb grip interior delivers a scratch-resistant, ultra-durable non-stick surface for everyday cooking



## TRIA COPPER COLLECTION

Model No: 24



Copper layer delivers rapid and even heat distribution, eliminating hot spots for flawless results



## TRIA CERAMIC COLLECTION

Model No: 25



Heat-efficient base ensures fast and even cooking for perfect results every time



## PENTA COPPER COLLECTION

Model No: 26



Five-ply stainless steel with a copper core ensures superior heat conductivity and precision cooking





## DURABLE CONSTRUCTION

Model No: 27



3-layer bottom structure for efficient heat conduction and lightweight handling



## PREMIUM COOKING QUALITY

Model No: 28



Authentic tri-ply stainless steel for a professional cooking experience.



## OPTIMIZED COOKING

Model No: 29



3-layer bottom structure for efficient heat conduction and lightweight handling



## EFFICIENCY & EXCELLENCE

Model No: 30



Tri-ply technology ensures optimal heat retention for better cooking results.

## SUPERIOR PERFORMANCE

Model No: 29



The synergy of external stainless steel and internal aluminum maximizes heat efficiency

